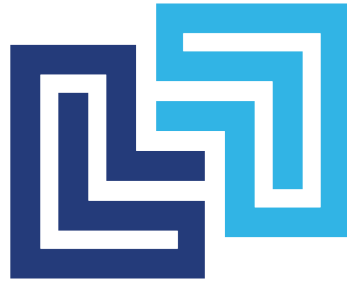


AGENDA ITEM 4D

Comprehensive Plan Future Land Use Map Amendment – ETJ Extension

MEMO



TO: Planning Commission

FROM: Christopher Solberg, AICP, Deputy Community Development Director

DATE: 10/5/2023

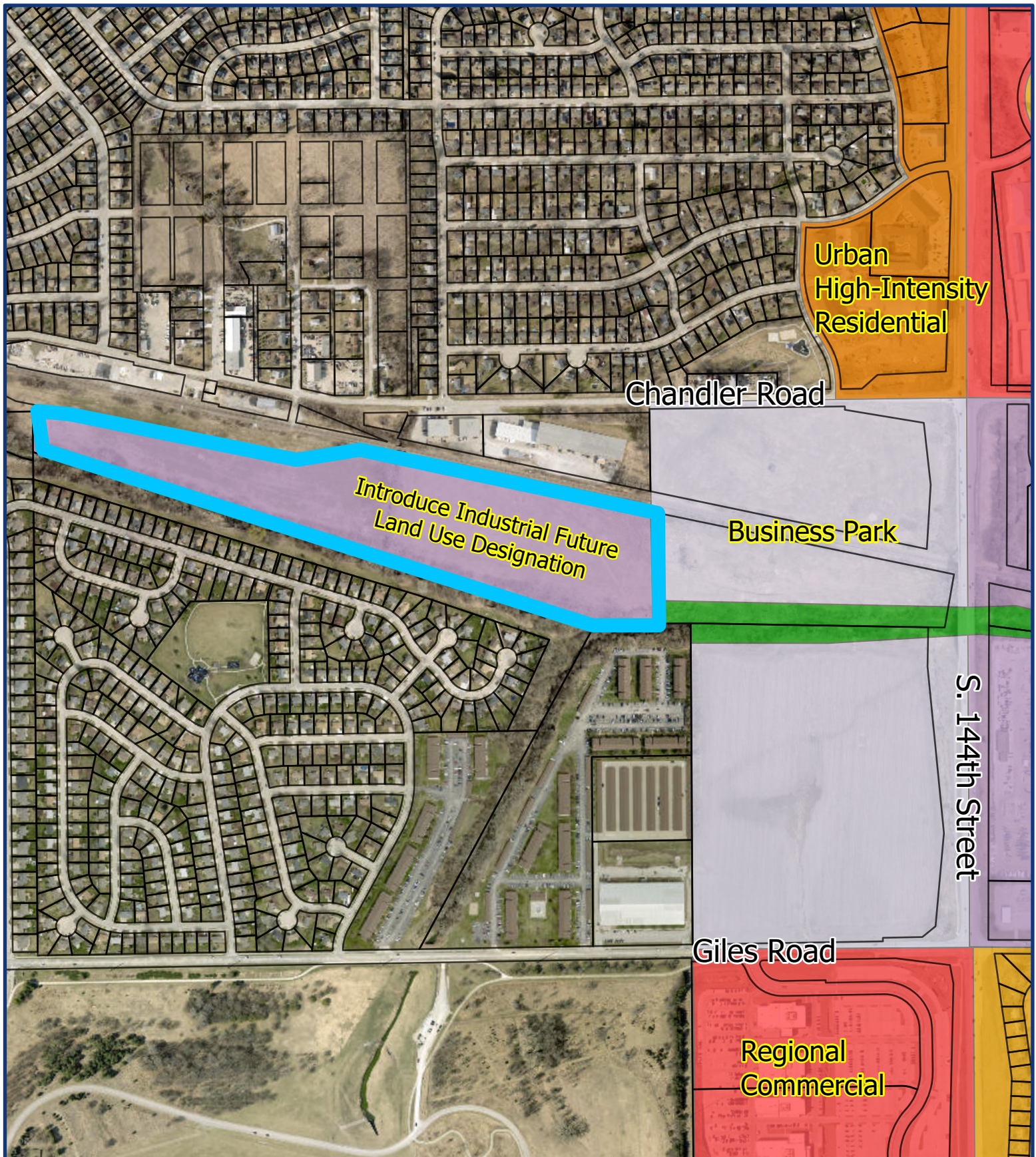
RE: Amendment to the City of La Vista Comprehensive Plan – Future Land Use Map

After the expansion of the City's Extraterritorial Jurisdiction (ETJ), the official Future Land Use Map is required to be amended to include those areas incorporated into the ETJ through the expansion.

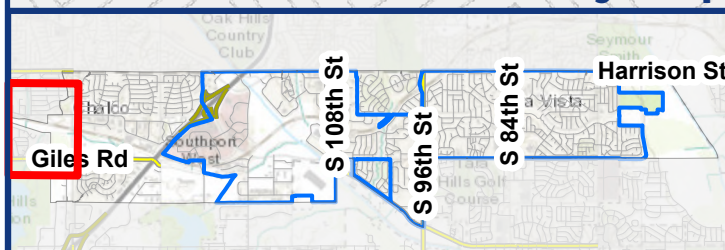
Staff has reviewed the current Future Land Use Map of Sarpy County in conjunction with this activity. Staff concurs with Sarpy County's land use designations and have developed amendments to the City's Future Land Use Map to reflect the land uses depicted within that map. The parcel being brought into the City's ETJ will be designated within La Vista's Future Land Use Map for future industrial development.

STAFF RECOMMENDATION:

Staff recommends the adoption of the amendment to the City of La Vista Future Land Use Map.



Vicinity Map - Future Land Use Map Amendment

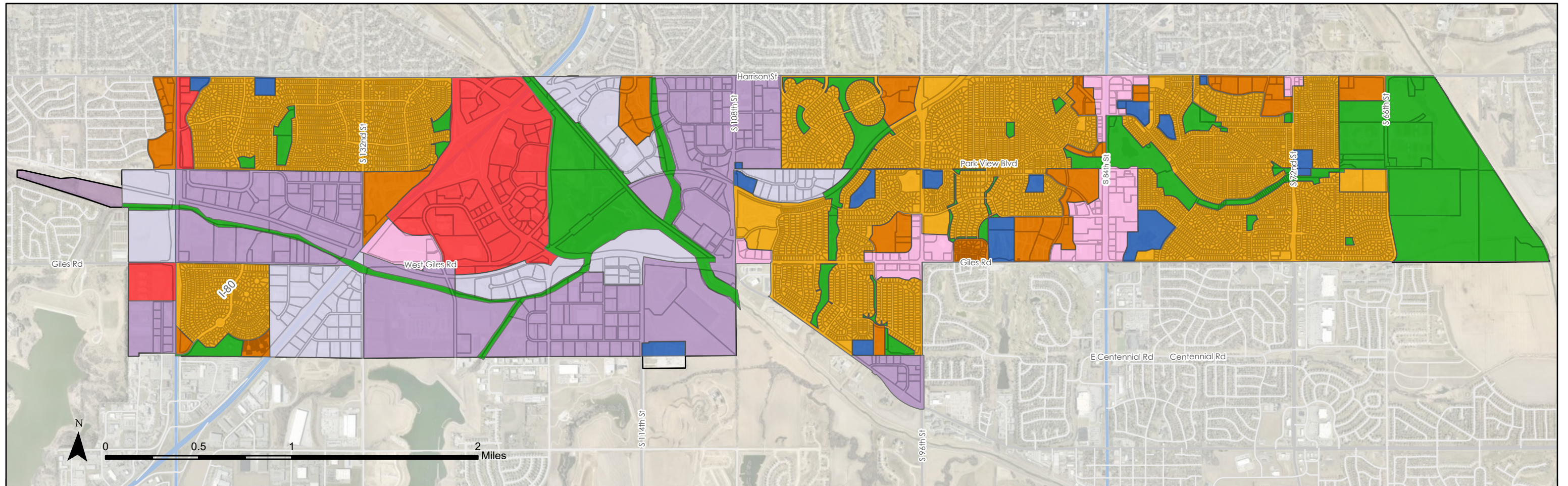


Legend

- Property Lines
- Amendment Boundary



Future Land Use Map



LEGEND

- | | | | |
|---|-------------------|---|------------------------------------|
|  | Business Park |  | Regional Commercial |
|  | Industrial |  | Urban High Intensity Residential |
|  | Park & Open Space |  | Urban Medium Intensity Residential |
|  | Public |  | Urban Commercial |

Amended: _____